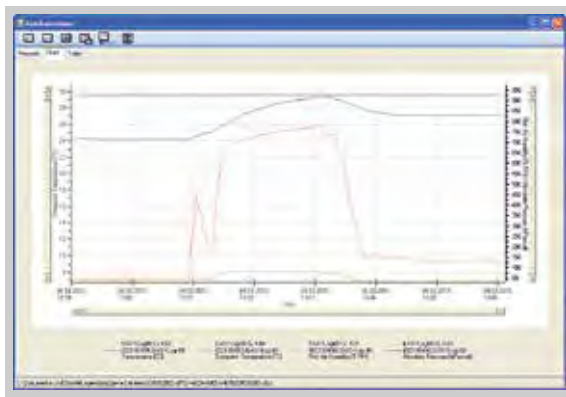


MEASUREMENT DATA ACQUISITION



HIGHLIGHTS:

- "Real-time" display of the measurement data
- Simultaneous support of several interfaces

EBS 20M

Item No. 601158

Measurement data acquisition software for EASYBus & GMH, for 20 channels

EBS 60M

Item No. 601160

Measurement data acquisition software for EASYBus & GMH, for 60 channels

GENERAL:

This software allows you to build an inexpensive and convenient multi-channel measurement data acquisition system. The program is ideal for recording, monitoring, displaying and documenting.

APPLICATIONS:

- Data evaluation on site
- Process, plant, climate and building monitoring
- "Real-time" display of the measurement data, for example for data evaluation and logging for cost listings, consumption overview, optimization of processes or other statistics

TECHNICAL SPECIFICATIONS:

Program execution:	Application with user interface
Data storage:	File (SQLite)
Export formats:	* .csv
Languages:	German English
Access control:	-
Remote access:	-
Alarm:	optically in the surface
Devices:	EASYBus devices (via EASYBus level converter) GMH 3000 Series (via GRS 3100 or USB 3100N) GMH 5000 Series (via USB 5100) GDUSB 1000 (in standard mode)
Multiple interfaces:	shareable
Recording interval:	from 0.5 s
Live display:	Yes
Data extraction of data loggers:	No
System requirements:	Windows 7 SP1 and higher (32 or 64 Bit Edition) Not executable under Windows RT, Windows 10 in S mode, on ARM or Intel Itanium based Windows systems
Scope of delivery:	DVD, printed instructions



HIGHLIGHTS:

- Visualization via LAN
- User accounts
- Simultaneous support of several interfaces
- Create reports from measurement data

EASYControl net

Item No. 601152

Network-compatible measurement data acquisition for Windows PC: EASYBUS, GMH3000, GMH5000

GENERAL:

This software can be used to build a network-based data acquisition and monitoring system at a low cost. The visualization can take place from any computer in the network.

APPLICATIONS:

Long-term monitoring of climate cabinets, refrigerators.
As soon as a visualization of distributed measuring points is to take place.

TECHNICAL SPECIFICATIONS:

Program execution:	Application with user interface
Data storage:	Database (PostgreSQL)
Export formats:	* .doc (Word) * .xls (Excel) * .pdf (Adobe Reader)
Languages:	German English
Access control:	Own user login
Remote access:	In the local network
Alarm:	optically in the surface Relay control via EBB Out
Devices:	EASYBus devices (via EASYBus level converter) GMH 3000 Series * (via GRS 3100 or USB 3100N) GMH 5000 Series * (via USB 5100)
Multiple interfaces:	Usable at the same time
Recording interval:	From 5 s
Live display:	Yes
Data extraction of data loggers:	No
System requirements:	Windows 7 SP1 and higher (32 or 64 bit edition) Not executable under Windows RT, Windows 10 in S mode, on ARM or Intel Itanium based Windows systems
Scope of delivery:	DVD, printed instructions

* Only devices with a unique serial number (printed on the nameplate)