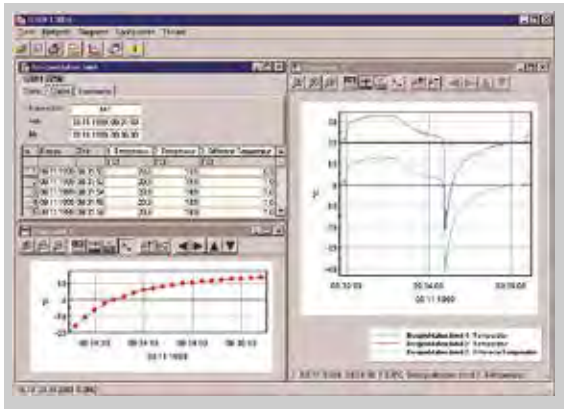


LOGGER SOFTWARE



HIGHLIGHTS:

- Operation of the logger function
- Diagram display
- Export function

GSOFT 3050

Item No. 601336

Windows software for GMH 3000 and GMH 5000 with logger

GENERAL:

Software for starting, stopping and reading out GMH 3000 Series and GMH 5000 Series devices with data logger. The extracted data can be visualized, stored, and prepared for further processing.

APPLICATIONS:

Pressing of heating systems, laboratory tests, test benches, and mobile data acquisition.

TECHNICAL SPECIFICATIONS:

| | |
|---|--|
| Program execution: | Application with user interface |
| Data storage: | File (binary) |
| Export formats: | * .csv |
| Languages: | German English French Czech |
| Access control: | - |
| Remote access: | - |
| Alarm: | - |
| Equipment: | GMH 3000 Series with data logger (via GRS 3100 or USB 3100N) GMH 5000 Series with data logger (via USB 5100) |
| Recording interval: | Depending on the data logger |
| Live display: | No |
| Data extraction of data loggers: | Yes |
| System requirements: | Windows 7 SP1 and higher (32 or 64 bit edition) Not executable under Windows RT, Windows 10 in S mode, on ARM or Intel Itanium based Windows systems |
| Scope of delivery: | DVD, printed instructions |



SOFTWARE CONNECTION

| | GMH 3000-DLL (Windows library) | GDUSB 1000-DLL (Windows library) (not shown) | Protocol description (www.greisinger.de) (not shown) |
|--------------------------------------|--------------------------------|--|--|
| GMH 3xxx, GMH 5xxx | • | | • |
| EASYBus and EB-Logg | | | • |
| TLogg | | | • |
| GDUSB 1000 | | • | |
| Start, stop, delete, read out logger | • | | |
| Program examples | Visual studio, Excel VBA | Visual studio | |
| at extra charge | • | • | |

GMH 3000.DLL

Item No. 603027

Windows function library for GMH For the interface communication
GMH3xxx/GMH5xxx <-> PC